

# **freestanding**

**091156**

**071156**

**561156**

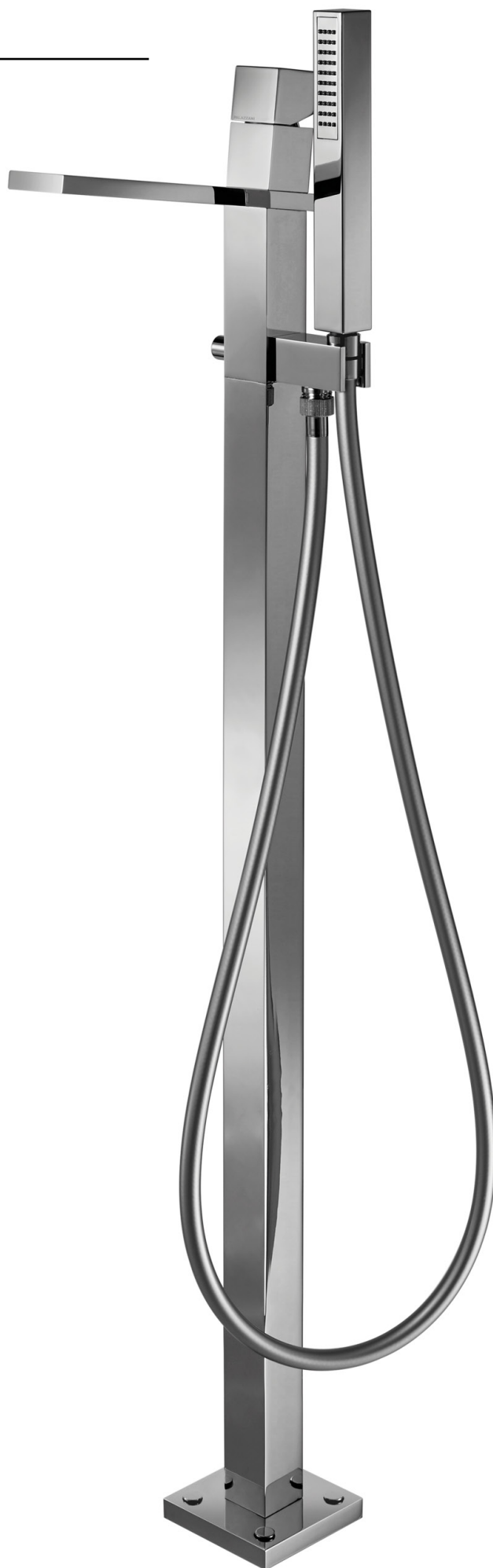
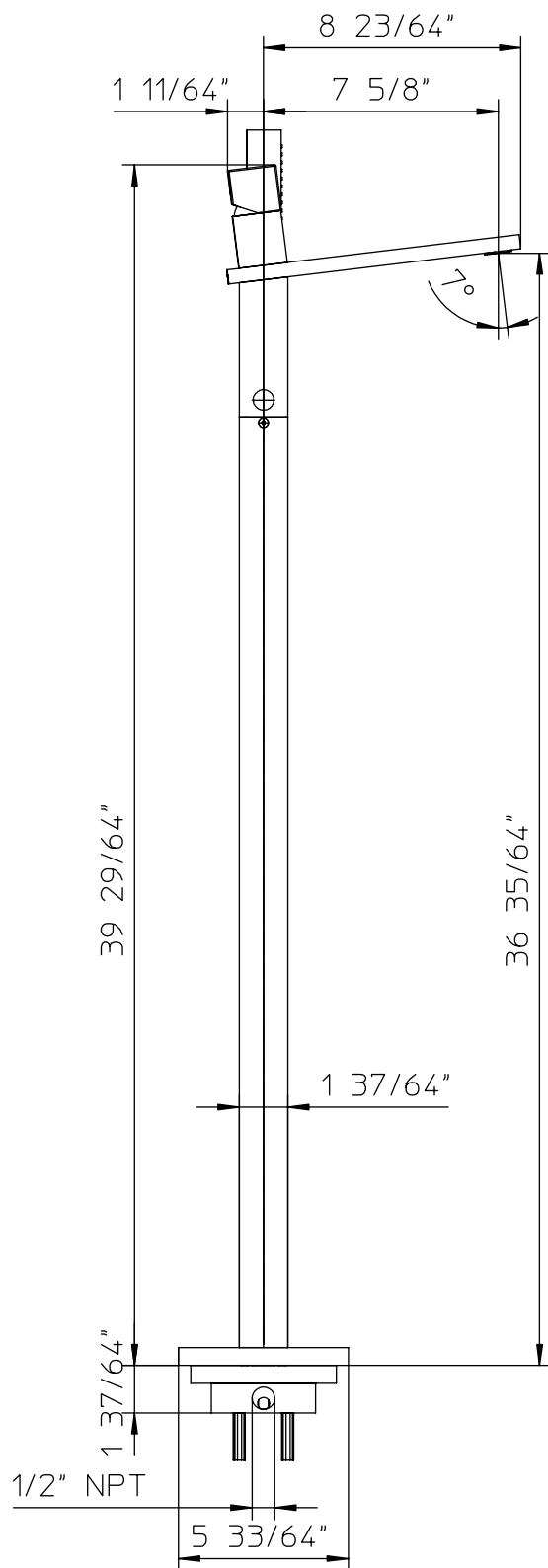
**121156**

# **PALAZZANI**

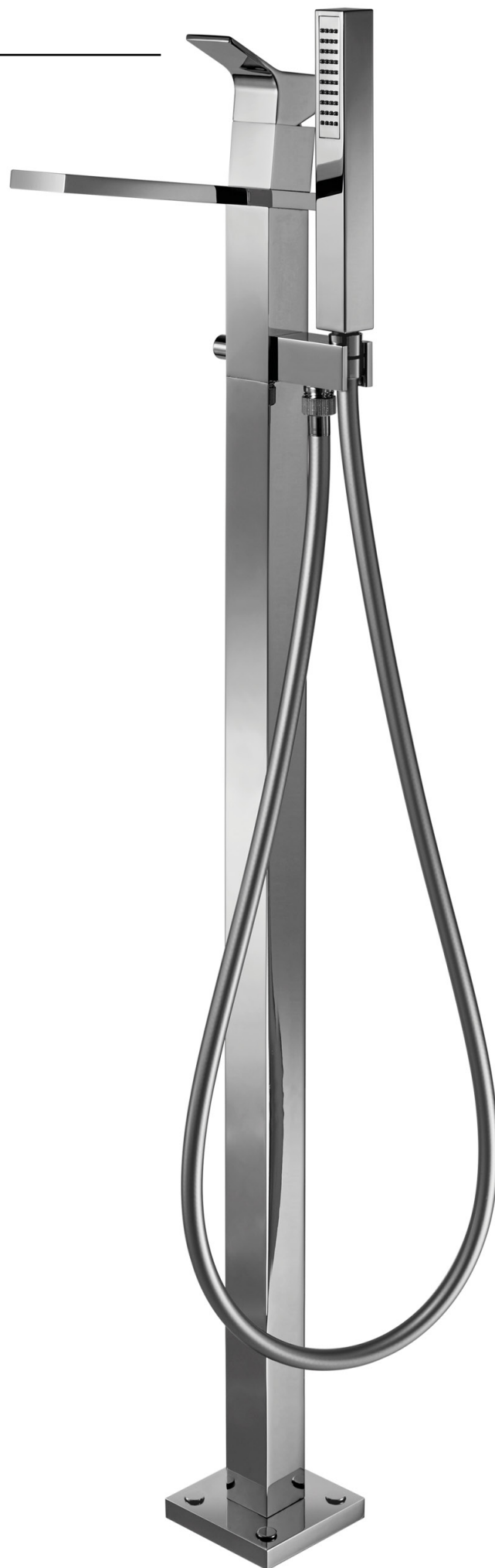
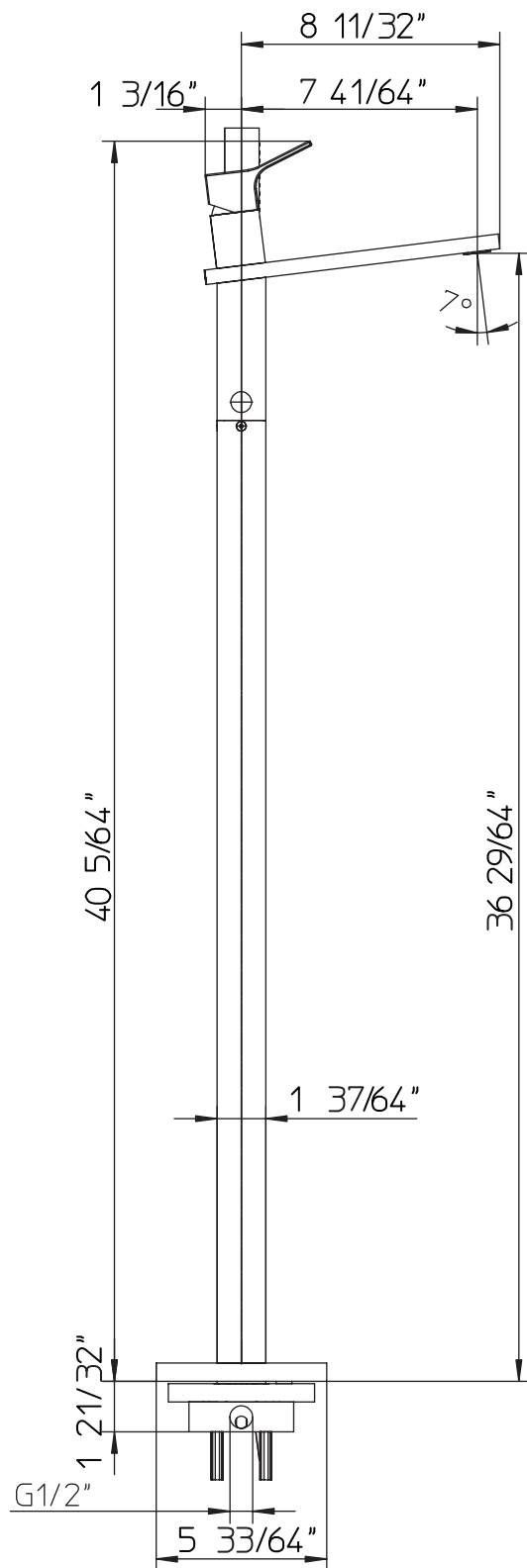
**Istruzioni di montaggio**  
**Mounting instructions**  
**Instructions de montage**  
**Montageanleitung**  
**Instrucciones de montaje**



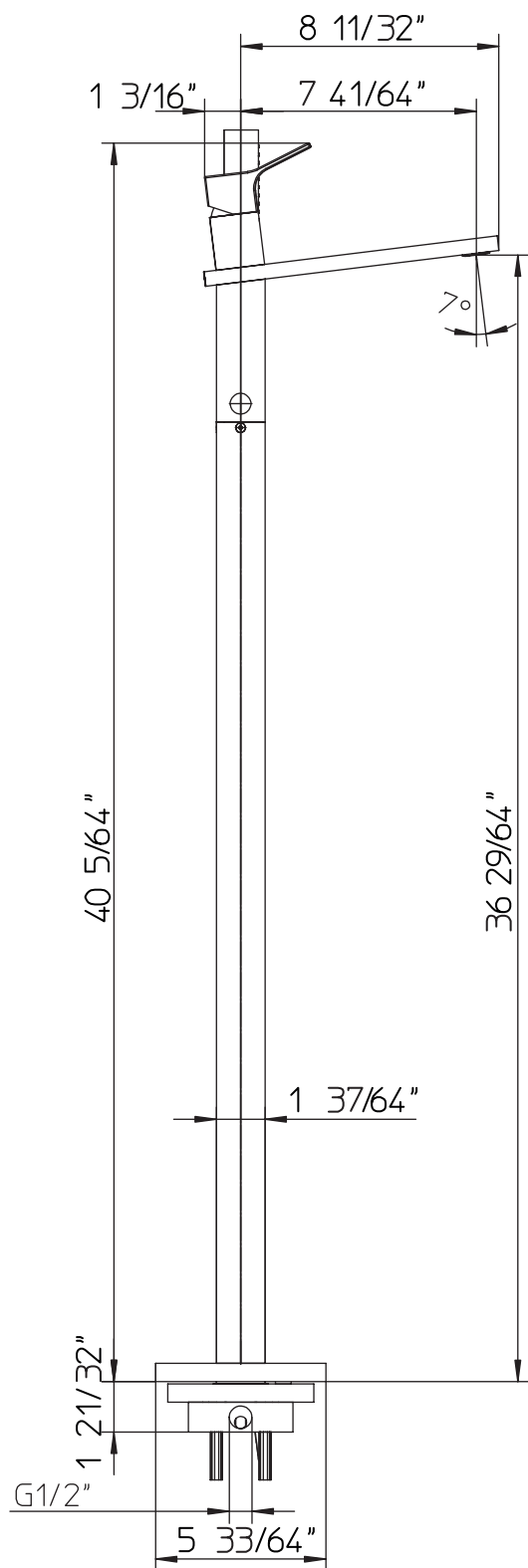
091156



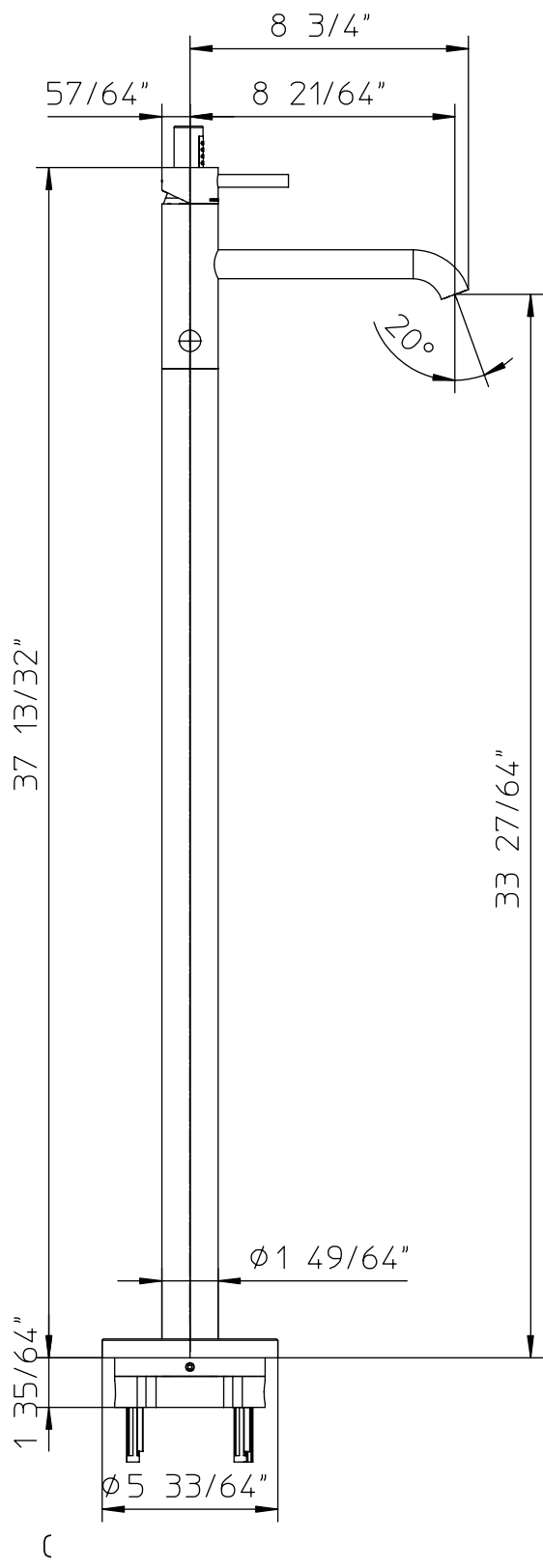
071156



561156



121156



# PALAZZANI

## Technical sheet:

### BATH-SHOWER FLOOR FREE STANDING WITH DIVERTER

#### TECHNICAL CHARACTERISTICS:

- TESTING PRESSURE 12 BAR
- HOT WATER MARK ON THE LEFT RED
- COLD WATER MARK ON THE RIGHT BLUE

#### LIMITS OF USE CONFORMING TO THE EUROPEAN EN 817 STANDARD

PRESSURE	MIN = 0.5 BAR	MAX = 10 BAR
TEMPERATURE		MAX = 90°

#### LIMITS OF USE RECOMMENDED BY EN 817 FOR GOOD OPERATION

PRESSURE	MIN = 1 BAR	MAX = 5 BAR
TEMPERATURE		MAX = 65°

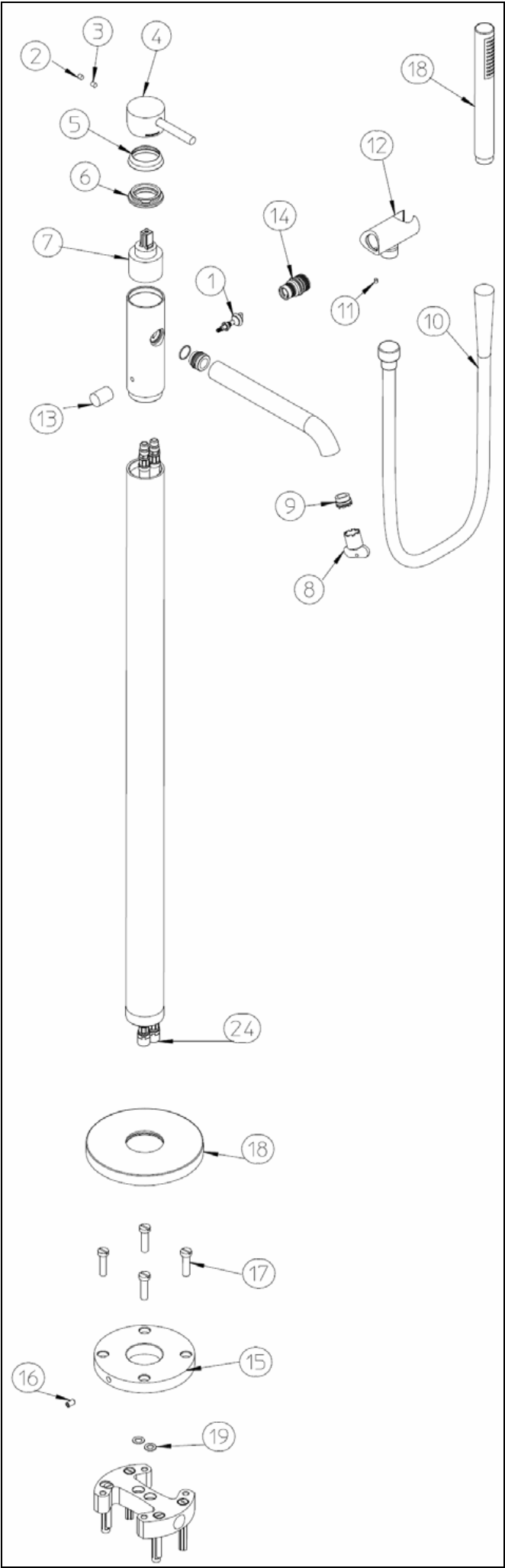
#### WARNINGS:

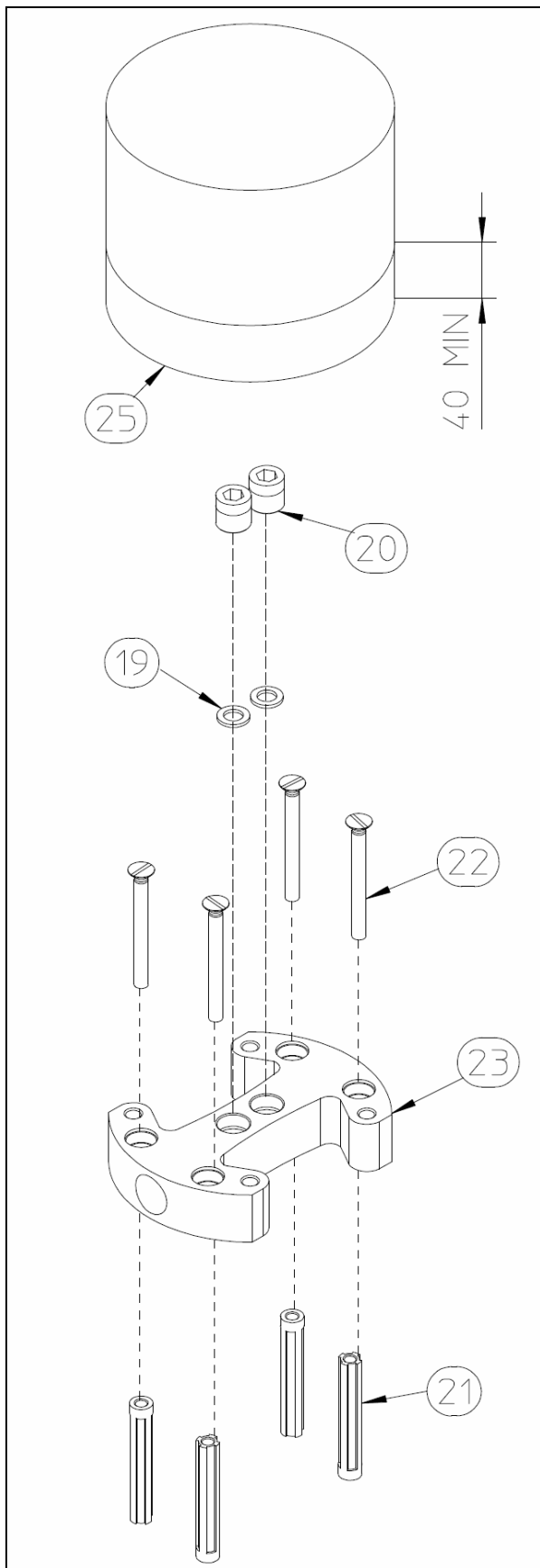
- RESPECT THE PROPER WATER INLETS ORIENTATION, HOT WATER ON THE LEFT AND COLD WATER ON THE RIGHT;
  - THE SYSTEM MUST BE VERY CAREFULLY DRAINED IN ADVANCE TO AVOID DAMAGE TO THE FITTING OR INSTALLED TECHNICAL DEVICES;
- A CENTRALIZED FILTER PROTECTS THE SYSTEM FROM IMPURITIES IN THE WATER;
- IN THE CASE OF WATER INLET PRESSURES HIGHER THAN 5 BAR, WE RECOMMEND INSTALLING A PRESSURE REDUCER TO PROTECT THE DEVICES;
- ANY INSTALLATION CARRIED OUT NOT IN ACCORDANCE TO THIS INSTALLATION MANUAL, CANNOT GUARANTEE THE PROPER FUNCTIONING OF THE MIXER

PROBLEM	POSSIBLE CAUSE	SOLUTION
COLD WATER FLOW WHEN HOT IS SELECTED	HOT AND COLD WATER INLETS ARE REVERSED	REVERSE INLETS PIPES
LOW FLOW RATE	SYSTEM PRESSURE TOO LOW  OUTPUTS OBSTRUCTED  IMPURITIES OBSTRUCT CARTRIDGE INLETS  INPUT FILTERS OBSTRUCTED	CHECK THE SYSTEM  CLEAN AERATOR, SHOWERHEAD, ACCESSORIES, ETC.  DISASSEMBLE THE CARTRIDGE AND CLEAN OR REPLACE IT  CLEAN INPUT FILTERS
COLD WATER ONLY	THE WATER INLETS ARE REVERSED  BOILER FAILURE	REVERSE INLETS PIPES  CHECK SYSTEM
DIFFICULT TEMPERATURE REGULATION	HOT WATER TEMPERATURE TOO LOW  LARGE DIFFERENCE BETWEEN WATER SUPPLY PRESSURES	CHECK THE HOT WATER SUPPLY TEMPERATURE  BALANCE THE WATER SUPPLY PRESSURES
LEAKS TO THE OUTPUT	GASKET SEALS DAMAGED  DIRT BETWEEN SEAL DISKS  CERAMIC DISKS SEVERELY DAMAGED BY IMPURITIES	CHECK THE GASKET SEALS  REPLACE THE CARTRIDGE  REPLACE THE CARTRIDGE
LEAKS BETWEEN CARTRIDGE AND BODY	GASKET SEAL DIRTY OR DAMAGED  LOCKNUT HOLDING CARTRIDGE LOOSE	CLEAN OR REPLACE GASKET SEALS  TIGHTEN THE LOCKNUT
SHOWER HEAD LEAKS WHEN WATER IS COMING OUT OF THE SPOUT	IMPURITIES ON THE DIVERTER GASKET	DISASSEMBLE AND CLEAN OR REPLACE THE DIVERTER
LEVER LOOSE	THE FIXING GRUB SCREW HAS LOOSENED WITH USE	TIGHTEN THE GRUB SCREW

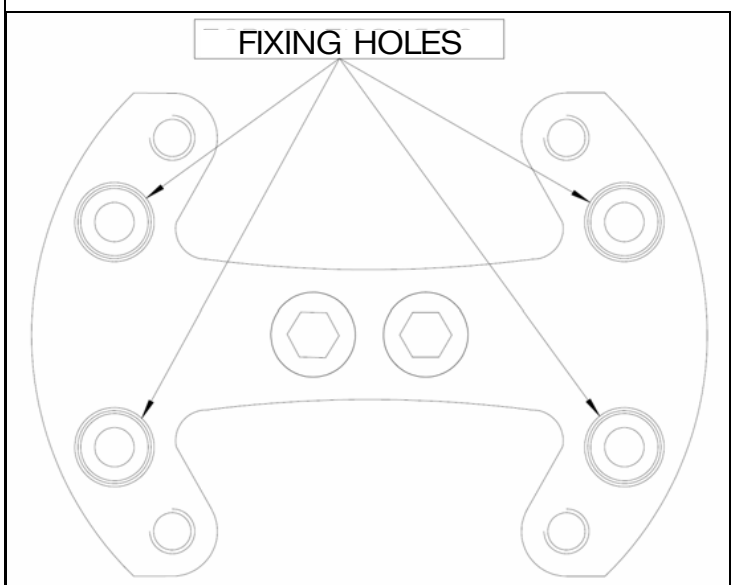
#### TECHNICAL MOUNTING INSTRUCTIONS:

- 1- DRILL THE FLOOR IN CORRESPONDENCE OF THE FIXING HOLES (22) OF THE BASE (23);
- 2- INSERT THE 4 PLUGS SUPPLIED (21), FIX THE BASE (23), THROUGH SCREWS (22), ON THE FLOOR ;
- 3- INSERT THE SEALS (19) AND STOPPERS (20) TO PERFORM TEST OF THE SYSTEM;
- 4- FIX THE CONCEALED PART HAVING RESPECT TO RESPECT THE MINIMUM OF DEPTH INDICATED. AS MAXIMUM DEPTH CONSIDER THE FINISHED HEIGHT FROM THE POINT OF DELIVERY WATER TO BE OBTAINED;
- 5- ONCE DONE TEST OF THE SYSTEM UNSCREW STOPPERS (20) PULL OUT THE SEALS (19) AND REPLACE THEM. IT IS RECOMMENDED TO MAKE A PURGE BEFORE MAKING THE FLEXIBLE CONNECTIONS (24) WITH THE RESPECTIVE SEALS (19), IF YOU DO NOT PROSEQUE WITH INSTALLATION TAKE CARE TO USE THE PROTECTIVE COVER (25) ON THE CONCEALED PART ;
- 6- FIX THE COMPLETE STAND LEG THROUGH SCREWS (17) TO THE CONCEALED PART PREVIOUSLY;
- 7- FIX THROUGH THE (16) THE STAND LEG TO THE FLOOR (15) IN ORDER TO ADJUST THE OPTIMUM POSITION. SCROLL DOWN THE CARTER (18) PRE MOUNTED ON THE STAND LEG, TO COVER THE CONCEALED PART.

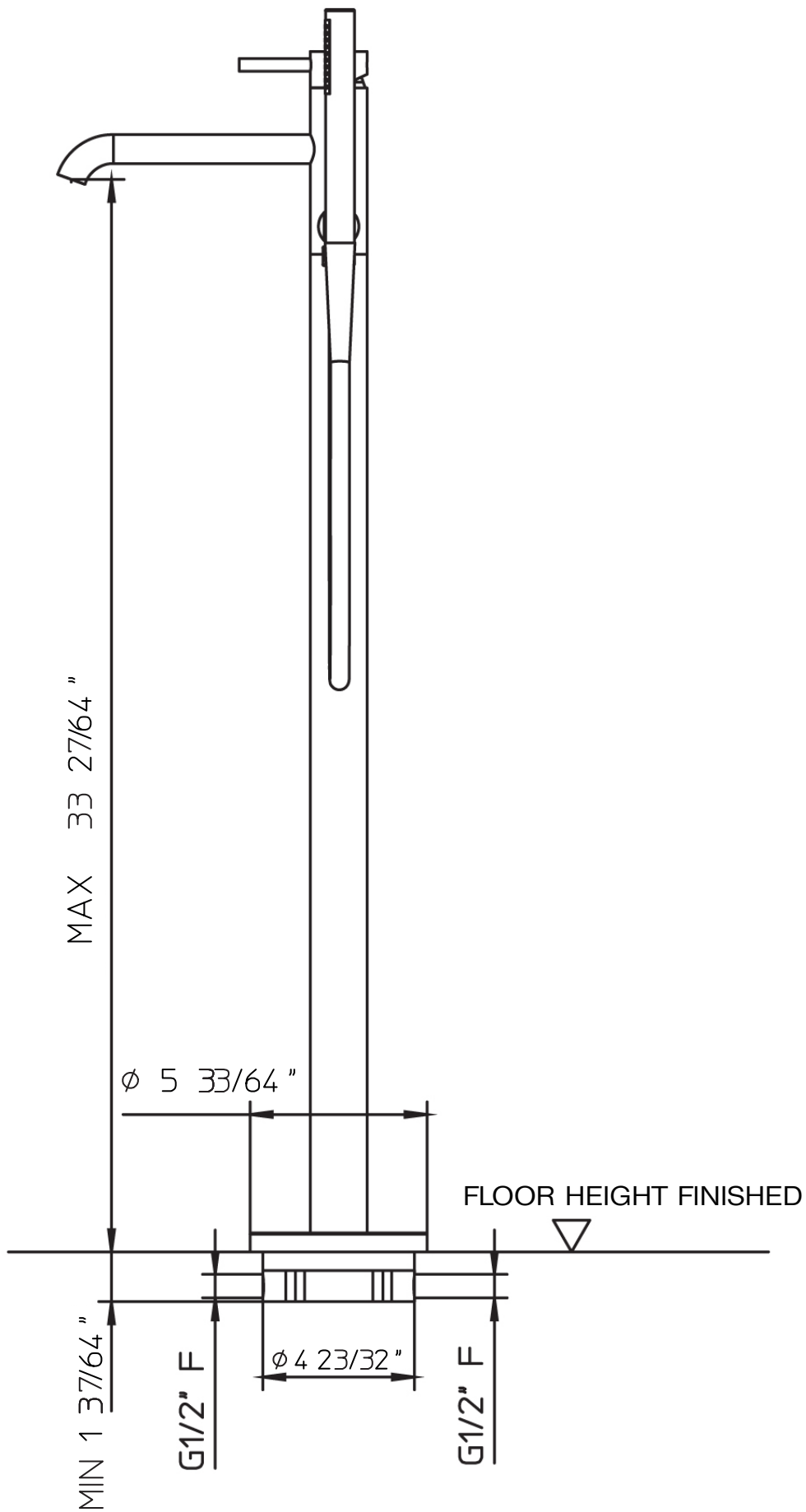




40 MIN







## **MAINTENANCE:**

FOR EFFECTUAD E MAINTENANCE OR VERIFY OF THE CARTDRIGE,REMEMBER TO CLOSE THE WATERS AND DOWNLOAD THE INTERNALSPRESSURE OPENING THE TAP:

- 1-REMOVE THE PLUG (2), UNSCREW THE CREW (3) AND REMOVE THE HANDLE (4);
- 2-REMOVE THE COVER CARTRIDGE ( 5);
- 3-WITH THE SPECIFICKEY, DISASSEMBLE THE FIXING LOOK RING CARTRIDGE (6);
- 4-VERIFY THE CARTDRIGE (7) AND DO THE REPLACEMENT IF RESULTS DAMAGED PROCEED IN OPPOSITE WAY FOR REMOUNT THE HANDLE.

## **MAINTENANCE AERATOR:**

- 1- UNSCREW WITH THE KEY SUPPLIED( 8)THE AERATOR (9);
- 2- RINSAWAY THE IMPURITIES DEPOSITED OR REPLACE THE AERATOR;
- 3- PROCEED IN OPPOSITE WAY FOR REMOUNT THE AERATOR.

## **MAINTENANCE DIVERTER:**

- 1- UNCREW THE FLEXIBLE (10);
- 2- UNCREW THE CREW (11);
- 3- DISASSAMBLE THE SHOWER HAND SUPPORT (12) PULLING SLIGHTLY TO THE OUTSIDE;
- 4- UNSCREW THE KNOB (13)
- 5- UNSCREW THE JUNCTION DIVERTER (14)WITH HEXAGONAL KEY;
- 6- VERIFY THE GASKET AND CLEAN THEM FROM ANY IMPURITIES OR REPLACE THE DIVERTER (14);
- 7- GREASE GASKET SEALS OF THE JUNCTION DIVERTER;
- 8- PROCEED IN THE OPPOSITE WAY FOR REMOUNT THE DIVERTER.

<b>MAINTENANCE</b>
<p>-FOR KEEPING THE BEAUTY OF THE SURFACE OF THE MIXER FOR LONG TIME DO NOT USE ACID OR ABRASIVE DETERGENTS OR ABRASIVE SPONGES OR SYNTHETIC CLOTHS, BECAUSE THEY COULD DAMAGE DEFINITIVELY THE SURFACES</p> <p>-FOR TAKING AWAY DIRTY OR SCALE PLEASE USE WATER AND SOAP OR NEUTRAL DETERGENTS,RISE WITH WATER AND DRY WITH A SOFT CLOTH</p>